



# SERVICE OF HOLY COMMUNION

TWENTY FIRST SUNDAY AFTER PENTECOST  
CONFIRMATION SUNDAY

OCTOBER 14, 2018 † 8:30 A.M. & 10:45 A.M.

ST. JOHN'S LUTHERAN CHURCH † NORTHFIELD, MINNESOTA

# *Welcome to worship at St. John's!*

**We especially welcome all who are visiting this morning!**

All are invited to **sign the welcome sheets** in the black folders at the end of the pews.

Please pass them to the center and then back  
so you can greet those worshipping around you.  
Ushers will gather these following worship.

In the red pew hymnal (Evangelical Lutheran Worship),  
page numbers are at the bottom of the page in the front section,  
and hymn numbers are at the top of the page in the hymn section.

An asterisk (\*) invites you to stand as you are able.

**P** Pastor, **L** Leader (Assisting Minister), **C** Congregation

**Children are welcome** to participate throughout our  
worship service, including at Holy Communion.

Parents, please assist children when they come forward for communion  
to extend their hands if they are to receive the bread and wine.

**Children's Bibles and activity bags**  
are available at both entrances to the Sanctuary  
and scribble cards are available in the pews.

Hearing assistance devices are available outside the Sanctuary or from an usher.

Large print bulletins are available for worship services.



St. John's Lutheran Church is a community grounded in the promise of God's grace  
and called to extend Christ's welcome to all people. Every day, Christ meets us all just as  
we are, extending love to people of every age, race or ethnicity, physical appearance,  
sexual orientation, gender identity, physical or mental ability, marital or  
relationship status, economic circumstance, educational achievement,  
political affiliation, or religious background.

While we do not always agree, we choose to walk and grow in faith together,  
believing that God creates diversity, and loves and welcomes us.

We warmly welcome you here.

# RITE OF CONFIRMATION

Today we rejoice in the gifts of baptism: the promise of God's faithfulness and forgiveness, the enlivening power of the Holy Spirit, and life together in the body of Christ.

At the 10:45 service, our 10<sup>th</sup> graders take part in the same Affirmation of Baptism – claiming God's promises for them at this moment in their lives. They have been through a long journey of catechesis in the faith, and many family members, teachers, and mentors have been part of this formation with them. We rejoice that they are ready to publicly claim

God's promises to them stating their intentions to continue in the faith: to live among God's faithful people, to hear God's word and share in the Lord's Supper, to proclaim the good news of God in Christ through word and deed, to serve all people, following the example of our Lord Jesus, and to strive for justice and peace in all the earth. They are:

Amelia Becker	Clayton Garlie	Peder Lindell	Kaylee Malecha
Gunnar Benson	Jaida Gehring	Ethan Little	Elsa Nystrom
Nicholas Boehning	Kai Legvold	Will Knutson	Stefany Perez
			Carl Welbaum

## GATHERING IN GOD'S PRESENCE

**Prelude** — on GATHER US IN

Jeffrey Honoré

**Welcome and Announcements**

**\*Gathering/Processional Hymn** — No. 532

"Gather Us In"

(8:30) **Children's Message and Affirmation of Baptism**

(10:45) **\*Presentation of Confirmands**

**\*Greeting**

☞ The grace of our Lord Jesus Christ, the love of God,  
and the communion of the Holy Spirit be with you all.

☞ And also with you.

## \*Prayer of the Day

**P** Let us pray.

Almighty and ever-living God, increase in us your gift of faith, that, forsaking what lies behind and reaching out to what lies ahead, we may follow the way of your commandments and receive the crown of everlasting joy, through Jesus Christ, our Savior and Lord. **Amen.**

# HEARING GOD'S WORD

(10:45) **Children's Message**

**First Reading** — Hebrews 4:12-16

Pew Bible, page 972

*After the reading:*

**L** The word of the Lord.

**G** Thanks be to God.

## \*Gospel Acclamation

Holden Evening Prayer, Marty Haugen

1., 3. My soul pro - claims your great - ness, O God, and my  
2. You have cast the might - y down from their thrones, and up -

spir - it re - joic - es in you, You have looked with love on your  
lift - ed the hum - ble of heart, You have filled the hun - gry with

ser - vant here, and blessed me all my life through. Great and might - y are  
won - drous things, and left the wealth - y no part. Great and might - y are

you, O Ho - ly One, strong is your kind - ness ev - er - more.  
you, O Faith - ful One, strong is your jus - tice, strong your love,

How you fa - vor the weak and low - ly one, hum - bling the proud of heart.  
As you prom - ised to Sar - ah and A - bra - ham, kind - ness for - ev - er - more.

**\*Gospel** — Mark 10:17-31

Spark Story Bible, page 334; Pew Bible, page 822

*Before the reading:*

☞ The Holy Gospel according to Mark, the 10<sup>th</sup> chapter.

☞ **Glory to you, O Lord.**

*After the reading:*

☞ The Gospel of the Lord.

☞ **Praise to you, O Christ.**

**Sermon**

Pastor Pam Fickenscher

## RESPONDING TO GOD'S WORD

**Hymn** — No. 666

“What Wondrous Love Is This”

(8:30) **\*The Apostles' Creed** — *Front of hymnal, page 127*

*(Worship at 8:30 continues with Prayers of Intercession.)*

(10:45) **Affirmation of Baptism and Rite of Confirmation**

*Front of hymnal, page 234*

**Prayer**

*Response:*

☞ **Amen.**

**Profession of Faith**

*Following each petition:*

☞ Lord, we believe.

☞ **Help our unbelief.**

**Intent to Continue in Our Baptismal Covenant with God**

## Promise of the Assembly

- P** People of God, do you promise to support these sisters and brothers and pray for them in their life in Christ?
- C** We do, and we ask God to help and guide us.

## Prayer of Invocation

- P** Let us pray. We give you thanks, O God, that through water and the Holy Spirit you give us new birth, cleanse us from sin, and raise us to eternal life.
- C** Amen.

## Confirmation through Laying On of Hands and Prayer

*Pastor, parents, sponsors, and mentors lay hands on the Confirmand's head and pray:*

Stir up in *-name-* the gift of your Holy Spirit: the spirit of wisdom and understanding, the spirit of counsel and might, the spirit of knowledge and the fear of the Lord, the spirit of joy in your presence, both now and forever. Amen.

*(The congregation softly sings while Confirmands are blessed.)*

## Response Hymns — “Holy Spirit, Come to Us”

VENI SANCTE

Ho - ly Spir - it, come to us. Ho - ly Spir - it, come to us.

The musical notation is for a hymn in G major (one sharp) and 6/8 time. It consists of two staves, treble and bass. The melody is simple and repetitive, with the lyrics 'Ho - ly Spir - it, come to us.' written below the notes. The piece ends with a double bar line and repeat dots.

Text and Music: Taizé Community, admin GIA Publications, reprinted under One License A-708009

## “Take, Oh, Take Me As I Am”

TAKE ME AS I AM

Take, oh, take me as I am; sum-mon out what I shall be;  
set your seal up-on my heart and live in me.

The musical notation is for a hymn in B-flat major (two flats) and 4/4 time. It consists of two staves, both in treble clef. The melody is simple and repetitive, with the lyrics 'Take, oh, take me as I am; sum-mon out what I shall be; set your seal up-on my heart and live in me.' written below the notes. The piece ends with a double bar line and repeat dots.

Text and Music: John Bell, © 1995 Iona Community, admin GIA Publications, reprinted under One License A-708009

## Celebrating with the Confirmands

- P** Let us rejoice with these sisters and brothers in Christ.
- C** **We rejoice with you in the life of baptism.**  
**Together we will give thanks and praise to God**  
**and proclaim the good news to all the world.**

### \*Prayers of Intercession

“Let My Prayer Rise Up”

Holden Evening Prayer, Marty Haugen

Let my prayer rise up like incense before you, the  
lift - ing up of my hands as an offering to you.

The musical notation is for a melody in G minor (three flats). It consists of two staves. The first staff has a treble clef and a key signature of three flats. The melody starts on a G4, moves to A4, Bb4, C5, D5, E5, F5, G5, A5, Bb5, C6, D6, E6, F6, G6, A6, Bb6, C7, D7, E7, F7, G7, A7, Bb7, C8, D8, E8, F8, G8, A8, Bb8, C9, D9, E9, F9, G9, A9, Bb9, C10, D10, E10, F10, G10, A10, Bb10, C11, D11, E11, F11, G11, A11, Bb11, C12, D12, E12, F12, G12, A12, Bb12, C13, D13, E13, F13, G13, A13, Bb13, C14, D14, E14, F14, G14, A14, Bb14, C15, D15, E15, F15, G15, A15, Bb15, C16, D16, E16, F16, G16, A16, Bb16, C17, D17, E17, F17, G17, A17, Bb17, C18, D18, E18, F18, G18, A18, Bb18, C19, D19, E19, F19, G19, A19, Bb19, C20, D20, E20, F20, G20, A20, Bb20, C21, D21, E21, F21, G21, A21, Bb21, C22, D22, E22, F22, G22, A22, Bb22, C23, D23, E23, F23, G23, A23, Bb23, C24, D24, E24, F24, G24, A24, Bb24, C25, D25, E25, F25, G25, A25, Bb25, C26, D26, E26, F26, G26, A26, Bb26, C27, D27, E27, F27, G27, A27, Bb27, C28, D28, E28, F28, G28, A28, Bb28, C29, D29, E29, F29, G29, A29, Bb29, C30, D30, E30, F30, G30, A30, Bb30, C31, D31, E31, F31, G31, A31, Bb31, C32, D32, E32, F32, G32, A32, Bb32, C33, D33, E33, F33, G33, A33, Bb33, C34, D34, E34, F34, G34, A34, Bb34, C35, D35, E35, F35, G35, A35, Bb35, C36, D36, E36, F36, G36, A36, Bb36, C37, D37, E37, F37, G37, A37, Bb37, C38, D38, E38, F38, G38, A38, Bb38, C39, D39, E39, F39, G39, A39, Bb39, C40, D40, E40, F40, G40, A40, Bb40, C41, D41, E41, F41, G41, A41, Bb41, C42, D42, E42, F42, G42, A42, Bb42, C43, D43, E43, F43, G43, A43, Bb43, C44, D44, E44, F44, G44, A44, Bb44, C45, D45, E45, F45, G45, A45, Bb45, C46, D46, E46, F46, G46, A46, Bb46, C47, D47, E47, F47, G47, A47, Bb47, C48, D48, E48, F48, G48, A48, Bb48, C49, D49, E49, F49, G49, A49, Bb49, C50, D50, E50, F50, G50, A50, Bb50, C51, D51, E51, F51, G51, A51, Bb51, C52, D52, E52, F52, G52, A52, Bb52, C53, D53, E53, F53, G53, A53, Bb53, C54, D54, E54, F54, G54, A54, Bb54, C55, D55, E55, F55, G55, A55, Bb55, C56, D56, E56, F56, G56, A56, Bb56, C57, D57, E57, F57, G57, A57, Bb57, C58, D58, E58, F58, G58, A58, Bb58, C59, D59, E59, F59, G59, A59, Bb59, C60, D60, E60, F60, G60, A60, Bb60, C61, D61, E61, F61, G61, A61, Bb61, C62, D62, E62, F62, G62, A62, Bb62, C63, D63, E63, F63, G63, A63, Bb63, C64, D64, E64, F64, G64, A64, Bb64, C65, D65, E65, F65, G65, A65, Bb65, C66, D66, E66, F66, G66, A66, Bb66, C67, D67, E67, F67, G67, A67, Bb67, C68, D68, E68, F68, G68, A68, Bb68, C69, D69, E69, F69, G69, A69, Bb69, C70, D70, E70, F70, G70, A70, Bb70, C71, D71, E71, F71, G71, A71, Bb71, C72, D72, E72, F72, G72, A72, Bb72, C73, D73, E73, F73, G73, A73, Bb73, C74, D74, E74, F74, G74, A74, Bb74, C75, D75, E75, F75, G75, A75, Bb75, C76, D76, E76, F76, G76, A76, Bb76, C77, D77, E77, F77, G77, A77, Bb77, C78, D78, E78, F78, G78, A78, Bb78, C79, D79, E79, F79, G79, A79, Bb79, C80, D80, E80, F80, G80, A80, Bb80, C81, D81, E81, F81, G81, A81, Bb81, C82, D82, E82, F82, G82, A82, Bb82, C83, D83, E83, F83, G83, A83, Bb83, C84, D84, E84, F84, G84, A84, Bb84, C85, D85, E85, F85, G85, A85, Bb85, C86, D86, E86, F86, G86, A86, Bb86, C87, D87, E87, F87, G87, A87, Bb87, C88, D88, E88, F88, G88, A88, Bb88, C89, D89, E89, F89, G89, A89, Bb89, C90, D90, E90, F90, G90, A90, Bb90, C91, D91, E91, F91, G91, A91, Bb91, C92, D92, E92, F92, G92, A92, Bb92, C93, D93, E93, F93, G93, A93, Bb93, C94, D94, E94, F94, G94, A94, Bb94, C95, D95, E95, F95, G95, A95, Bb95, C96, D96, E96, F96, G96, A96, Bb96, C97, D97, E97, F97, G97, A97, Bb97, C98, D98, E98, F98, G98, A98, Bb98, C99, D99, E99, F99, G99, A99, Bb99, C100, D100, E100, F100, G100, A100, Bb100, C101, D101, E101, F101, G101, A101, Bb101, C102, D102, E102, F102, G102, A102, Bb102, C103, D103, E103, F103, G103, A103, Bb103, C104, D104, E104, F104, G104, A104, Bb104, C105, D105, E105, F105, G105, A105, Bb105, C106, D106, E106, F106, G106, A106, Bb106, C107, D107, E107, F107, G107, A107, Bb107, C108, D108, E108, F108, G108, A108, Bb108, C109, D109, E109, F109, G109, A109, Bb109, C110, D110, E110, F110, G110, A110, Bb110, C111, D111, E111, F111, G111, A111, Bb111, C112, D112, E112, F112, G112, A112, Bb112, C113, D113, E113, F113, G113, A113, Bb113, C114, D114, E114, F114, G114, A114, Bb114, C115, D115, E115, F115, G115, A115, Bb115, C116, D116, E116, F116, G116, A116, Bb116, C117, D117, E117, F117, G117, A117, Bb117, C118, D118, E118, F118, G118, A118, Bb118, C119, D119, E119, F119, G119, A119, Bb119, C120, D120, E120, F120, G120, A120, Bb120, C121, D121, E121, F121, G121, A121, Bb121, C122, D122, E122, F122, G122, A122, Bb122, C123, D123, E123, F123, G123, A123, Bb123, C124, D124, E124, F124, G124, A124, Bb124, C125, D125, E125, F125, G125, A125, Bb125, C126, D126, E126, F126, G126, A126, Bb126, C127, D127, E127, F127, G127, A127, Bb127, C128, D128, E128, F128, G128, A128, Bb128, C129, D129, E129, F129, G129, A129, Bb129, C130, D130, E130, F130, G130, A130, Bb130, C131, D131, E131, F131, G131, A131, Bb131, C132, D132, E132, F132, G132, A132, Bb132, C133, D133, E133, F133, G133, A133, Bb133, C134, D134, E134, F134, G134, A134, Bb134, C135, D135, E135, F135, G135, A135, Bb135, C136, D136, E136, F136, G136, A136, Bb136, C137, D137, E137, F137, G137, A137, Bb137, C138, D138, E138, F138, G138, A138, Bb138, C139, D139, E139, F139, G139, A139, Bb139, C140, D140, E140, F140, G140, A140, Bb140, C141, D141, E141, F141, G141, A141, Bb141, C142, D142, E142, F142, G142, A142, Bb142, C143, D143, E143, F143, G143, A143, Bb143, C144, D144, E144, F144, G144, A144, Bb144, C145, D145, E145, F145, G145, A145, Bb145, C146, D146, E146, F146, G146, A146, Bb146, C147, D147, E147, F147, G147, A147, Bb147, C148, D148, E148, F148, G148, A148, Bb148, C149, D149, E149, F149, G149, A149, Bb149, C150, D150, E150, F150, G150, A150, Bb150, C151, D151, E151, F151, G151, A151, Bb151, C152, D152, E152, F152, G152, A152, Bb152, C153, D153, E153, F153, G153, A153, Bb153, C154, D154, E154, F154, G154, A154, Bb154, C155, D155, E155, F155, G155, A155, Bb155, C156, D156, E156, F156, G156, A156, Bb156, C157, D157, E157, F157, G157, A157, Bb157, C158, D158, E158, F158, G158, A158, Bb158, C159, D159, E159, F159, G159, A159, Bb159, C160, D160, E160, F160, G160, A160, Bb160, C161, D161, E161, F161, G161, A161, Bb161, C162, D162, E162, F162, G162, A162, Bb162, C163, D163, E163, F163, G163, A163, Bb163, C164, D164, E164, F164, G164, A164, Bb164, C165, D165, E165, F165, G165, A165, Bb165, C166, D166, E166, F166, G166, A166, Bb166, C167, D167, E167, F167, G167, A167, Bb167, C168, D168, E168, F168, G168, A168, Bb168, C169, D169, E169, F169, G169, A169, Bb169, C170, D170, E170, F170, G170, A170, Bb170, C171, D171, E171, F171, G171, A171, Bb171, C172, D172, E172, F172, G172, A172, Bb172, C173, D173, E173, F173, G173, A173, Bb173, C174, D174, E174, F174, G174, A174, Bb174, C175, D175, E175, F175, G175, A175, Bb175, C176, D176, E176, F176, G176, A176, Bb176, C177, D177, E177, F177, G177, A177, Bb177, C178, D178, E178, F178, G178, A178, Bb178, C179, D179, E179, F179, G179, A179, Bb179, C180, D180, E180, F180, G180, A180, Bb180, C181, D181, E181, F181, G181, A181, Bb181, C182, D182, E182, F182, G182, A182, Bb182, C183, D183, E183, F183, G183, A183, Bb183, C184, D184, E184, F184, G184, A184, Bb184, C185, D185, E185, F185, G185, A185, Bb185, C186, D186, E186, F186, G186, A186, Bb186, C187, D187, E187, F187, G187, A187, Bb187, C188, D188, E188, F188, G188, A188, Bb188, C189, D189, E189, F189, G189, A189, Bb189, C190, D190, E190, F190, G190, A190, Bb190, C191, D191, E191, F191, G191, A191, Bb191, C192, D192, E192, F192, G192, A192, Bb192, C193, D193, E193, F193, G193, A193, Bb193, C194, D194, E194, F194, G194, A194, Bb194, C195, D195, E195, F195, G195, A195, Bb195, C196, D196, E196, F196, G196, A196, Bb196, C197, D197, E197, F197, G197, A197, Bb197, C198, D198, E198, F198, G198, A198, Bb198, C199, D199, E199, F199, G199, A199, Bb199, C200, D200, E200, F200, G200, A200, Bb200, C201, D201, E201, F201, G201, A201, Bb201, C202, D202, E202, F202, G202, A202, Bb202, C203, D203, E203, F203, G203, A203, Bb203, C204, D204, E204, F204, G204, A204, Bb204, C205, D205, E205, F205, G205, A205, Bb205, C206, D206, E206, F206, G206, A206, Bb206, C207, D207, E207, F207, G207, A207, Bb207, C208, D208, E208, F208, G208, A208, Bb208, C209, D209, E209, F209, G209, A209, Bb209, C210, D210, E210, F210, G210, A210, Bb210, C211, D211, E211, F211, G211, A211, Bb211, C212, D212, E212, F212, G212, A212, Bb212, C213, D213, E213, F213, G213, A213, Bb213, C214, D214, E214, F214, G214, A214, Bb214, C215, D215, E215, F215, G215, A215, Bb215, C216, D216, E216, F216, G216, A216, Bb216, C217, D217, E217, F217, G217, A217, Bb217, C218, D218, E218, F218, G218, A218, Bb218, C219, D219, E219, F219, G219, A219, Bb219, C220, D220, E220, F220, G220, A220, Bb220, C221, D221, E221, F221, G221, A221, Bb221, C222, D222, E222, F222, G222, A222, Bb222, C223, D223, E223, F223, G223, A223, Bb223, C224, D224, E224, F224, G224, A224, Bb224, C225, D225, E225, F225, G225, A225, Bb225, C226, D226, E226, F226, G226, A226, Bb226, C227, D227, E227, F227, G227, A227, Bb227, C228, D228, E228, F228, G228, A228, Bb228, C229, D229, E229, F229, G229, A229, Bb229, C230, D230, E230, F230, G230, A230, Bb230, C231, D231, E231, F231, G231, A231, Bb231, C232, D232, E232, F232, G232, A232, Bb232, C233, D233, E233, F233, G233, A233, Bb233, C234, D234, E234, F234, G234, A234, Bb234, C235, D235, E235, F235, G235, A235, Bb235, C236, D236, E236, F236, G236, A236, Bb236, C237, D237, E237, F237, G237, A237, Bb237, C238, D238, E238, F238, G238, A238, Bb238, C239, D239, E239, F239, G239, A239, Bb239, C240, D240, E240, F240, G240, A240, Bb240, C241, D241, E241, F241, G241, A241, Bb241, C242, D242, E242, F242, G242, A242, Bb242, C243, D243, E243, F243, G243, A243, Bb243, C244, D244, E244, F244, G244, A244, Bb244, C245, D245, E245, F245, G245, A245, Bb245, C246, D246, E246, F246, G246, A246, Bb246, C247, D247, E247, F247, G247, A247, Bb247, C248, D248, E248, F248, G248, A248, Bb248, C249, D249, E249, F249, G249, A249, Bb249, C250, D250, E250, F250, G250, A250, Bb250, C251, D251, E251, F251, G251, A251, Bb251, C252, D252, E252, F252, G252, A252, Bb252, C253, D253, E253, F253, G253, A253, Bb253, C254, D254, E254, F254, G254, A254, Bb254, C255, D255, E255, F255, G255, A255, Bb255, C256, D256, E256, F256, G256, A256, Bb256, C257, D257, E257, F257, G257, A257, Bb257, C258, D258, E258, F258, G258, A258, Bb258, C259, D259, E259, F259, G259, A259, Bb259, C260, D260, E260, F260, G260, A260, Bb260, C261, D261, E261, F261, G261, A261, Bb261, C262, D262, E262, F262, G262, A262, Bb262, C263, D263, E263, F263, G263, A263, Bb263, C264, D264, E264, F264, G264, A264, Bb264, C265, D265, E265, F265, G265, A265, Bb265, C266, D266, E266, F266, G266, A266, Bb266, C267, D267, E267, F267, G267, A267, Bb267, C268, D268, E268, F268, G268, A268, Bb268, C269, D269, E269, F269, G269, A269, Bb269, C270, D270, E270, F270, G270, A270, Bb270, C271, D271, E271, F271, G271, A271, Bb271, C272, D272, E272, F272, G272, A272, Bb272, C273, D273, E273, F273, G273, A273, Bb273, C274, D274, E274, F274, G274, A274, Bb274, C275, D275, E275, F275, G275, A275, Bb275, C276, D276, E276, F276, G276, A276, Bb276, C277, D277, E277, F277, G277, A277, Bb277, C278, D278, E278, F278, G278, A278, Bb278, C279, D279, E279, F279, G279, A279, Bb279, C280, D280, E280, F280, G280, A280, Bb280, C281, D281, E281, F281, G281, A281, Bb281, C282, D282, E282, F282, G282, A282, Bb282, C283, D283, E283, F283, G283, A283, Bb283, C284, D284, E284, F284, G284, A284, Bb284, C285, D285, E285, F285, G285, A285, Bb285, C286, D286, E286, F286, G286, A286, Bb286, C287, D287, E287, F287, G287, A287, Bb287, C288, D288, E288, F288, G288, A288, Bb288, C289, D289, E289, F289, G289, A289, Bb289, C290, D290, E290, F290, G290, A290, Bb290, C291, D291, E291, F291, G291, A291, Bb291, C292, D292, E292, F292, G292, A292, Bb292, C293, D293, E293, F293, G293, A293, Bb293, C294, D294, E294, F294, G294, A294, Bb294, C295, D295, E295, F295, G295, A295, Bb295, C296, D296, E296, F296, G296, A296, Bb296, C297, D297, E297, F297, G297, A297, Bb297, C298, D298, E298, F298, G298, A298, Bb298, C299, D299, E299, F299, G299, A299, Bb299, C300, D300, E300, F300, G300, A300, Bb300, C301, D301, E301, F301, G301, A301, Bb301, C302, D302, E302, F302, G302, A302, Bb302, C303, D303, E303, F303, G303, A303, Bb303, C304, D304, E304, F304, G304, A304, Bb304, C305, D305, E305, F305, G305, A305, Bb305, C306, D306, E306, F306, G306, A306, Bb306, C307, D307, E307, F307, G307, A307, Bb307, C308, D308, E308, F308, G308, A308, Bb308, C309, D309, E309, F309, G309, A309, Bb309, C310, D310, E310, F310, G310, A310, Bb310, C311, D311, E311, F311, G311, A311, Bb311, C312, D312, E312, F312, G312, A312, Bb312, C313, D313, E313, F313, G313, A313, Bb313, C314, D314, E314, F314, G314, A314, Bb314, C315, D315, E315, F315, G315, A315, Bb315, C316, D316, E316, F316, G316, A316, Bb316, C317, D317, E317, F317, G317, A317, Bb317, C318, D318, E318, F318, G318, A318, Bb318, C319, D319, E319, F319, G319, A319, Bb319, C320, D320, E320, F320, G320, A320, Bb320, C321, D321, E321, F321, G321, A321, Bb321, C322, D322, E322, F322, G322, A322, Bb322, C323, D323, E323, F323, G323, A323, Bb323, C324, D324, E324, F324, G324, A324, Bb324, C325, D325, E325, F325, G325, A325, Bb325, C326, D326, E326, F326, G326, A326, Bb326, C327, D327, E327, F327, G327, A327, Bb327, C328, D328, E328, F328, G328, A328, Bb328, C329, D329, E329, F329, G329, A329, Bb329, C330, D330, E330, F330, G330, A330, Bb330, C331, D331, E331, F331, G331, A331, Bb331, C332, D332, E332, F332, G332, A332, Bb332, C333, D333, E333, F333, G333, A333, Bb333, C334, D334, E334, F334, G334, A334, Bb334, C335, D335, E335, F335, G335, A335, Bb335, C336, D336, E336, F336, G336, A336, Bb336, C337, D337, E337, F337, G337, A337, Bb337, C338, D338, E338, F338, G338, A338, Bb338, C339, D339, E339, F339, G339, A339, Bb339, C340, D340, E340, F340, G340, A340, Bb340, C341, D341, E341, F341, G341, A341, Bb341, C342, D342, E342, F342, G342, A342, Bb342, C343, D343, E343, F343, G343, A343, Bb343, C344, D344, E344, F344, G344, A344, Bb344, C345, D345, E345, F345, G345, A345, Bb345, C346, D346, E346, F346, G346, A346, Bb346, C347, D347, E347, F347, G347, A347, Bb347, C348, D348, E348, F348, G348, A348, Bb348, C349, D349, E349, F349, G349, A349, Bb349, C350, D350, E350, F350, G350, A350, Bb350, C351, D351, E351, F351, G351, A351, Bb351, C352, D352, E352, F352, G352, A352, Bb352, C353, D353, E353, F353, G353, A353, Bb353, C354, D354, E354, F354, G354, A354, Bb354, C355, D355, E355, F355, G355, A355, Bb355, C356, D356, E356, F356, G356, A356, Bb356, C357

## Offering of Our Gifts

*Music at the Offering:*

(8:30) “Humble Service”

arr. Larry L. Fleming

*Lord, whose love in humble service bore the weight of human need, who upon the cross forsaken worked your mercy's perfect deed: We, your servants, bring the worship not of voice alone, but heart; consecrating to your purpose ev'ry gift which you impart. Still your children wander homeless; still the hungry cry for bread; still the captives long for freedom; still in grief we mourn our dead. As you Lord, in deep compassion healed the sick and freed the soul. By your Spirit send power to our world to make whole. As we worship, grant us vision, till your love's revealing light in its height and depth and greatness dawns upon our quickened sight, making known the needs and burdens your compassion bids us bear, stirring us to ardent service, your abundant life to share.*

-Albert F. Bayly

*St. John's Chorale*

(10:45) “Child of God”

Mark A. Miller

*No matter what people say, say or think about me, I am a child of God. No matter what people say, say or think about you, you are a child of God. No matter what the world says, says or thinks about me, I am a child of God. No matter what the church says, decisions, pronouncements on you, you are a child of God. And there is no thing, or no one who can separate, you from the truth that you're someone, you are family, you are meant to be a child of God! You are a child, a child of God!*

*Laudate Choir*

**\*Offering Hymn — “For the Fruit of All Creation”**

AR HYD Y NOS

**For the fruit of all creation, thanks be to God.**

**For these gifts to ev'ry nation, thanks be to God**

**For the sowing, tending, reaping, silent growth while we are sleeping,  
future needs in earth's safe-keeping, thanks be to God.**

**\*Offering Prayer**

**L** Let us pray together.

**A** God of life, you give us these gifts of the earth, these resources of our life and our labor. Take them, offered in great thanksgiving, and use them to set a table that will heal the whole creation; through Jesus Christ, our Savior and Lord. Amen

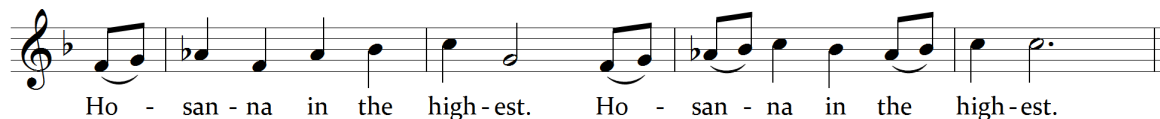
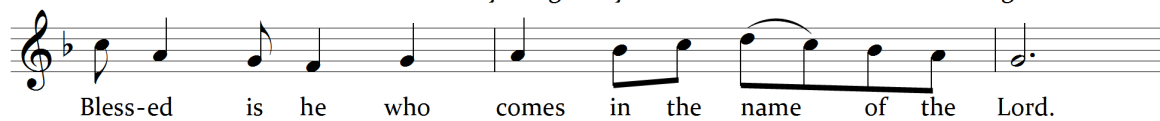
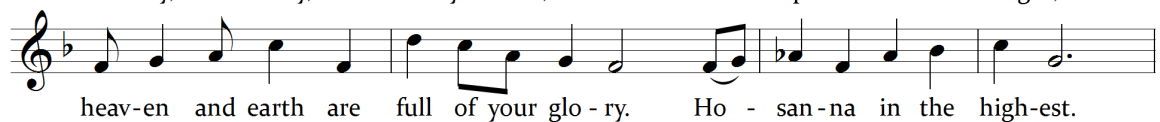


# SHARING THE LORD'S SUPPER

## \*Great Thanksgiving



**P** It is indeed right ... we praise your name and join their unending hymn:



## \*Words of Institution

## \*The Lord's Prayer

Our Father in heaven, hallowed be your name,  
your kingdom come, your will be done,  
on earth as in heaven.

Give us today our daily bread.

Forgive us our sins as we forgive those who sin against us.


Save us from the time of trial and deliver us from evil.

For the kingdom, the power, and the glory are yours,  
now and forever. Amen.

*All God's children are welcome at the table. Communion will be received standing at the front of the sanctuary; ushers will direct you forward. **Gluten-free wafers** are available in the middle. After you have been served the bread, you will be offered **wine or grape juice**. The **grape juice** is white and is located in the center of the tray. If you are unable to come forward, let an usher know, and communion will be brought to you.*

## Music during Communion

"Lamb of God"



The musical notation for "Lamb of God" is presented in three parts, each on a single staff with a treble clef and a key signature of one flat (B-flat). The melody is simple and repetitive, consisting of eighth and quarter notes. The lyrics are written below each staff.

Lamb of God, you take a-way the sin of the world; have mer - cy on us.

Lamb of God, you take a-way the sin of the world; have mer - cy on us.

Lamb of God, you take a-way the sin of the world; grant us peace.

Hymn — No. 781

"Children of the Heavenly Father"

Hymn — No. 793

"Be Thou My Vision"

## \*Post-Communion Blessing

**\*Prayer after Communion**

**P** Let us pray.

**A** Holy God, in bread and wine you give us gifts that form us to be humble and courageous. May your words come to life in our serving and in our witness, that we might speak a living voice of healing and justice to all the world, through Jesus Christ. Amen.

## DEPARTING TO SERVE GOD’S WORLD

**\*Blessing**

*Response:*

**C** Amen.

**\*Sending Hymn** — “Sent Forth By God’s Blessing” *stanza 2*

THE ASH GROVE

With praise and thanksgiving to God ever-living,  
the tasks of our ev’ryday life we will face—  
our faith ever sharing, in love ever caring,  
embracing God’s children, the whole human race.  
With your feast you feed us, with your light now lead us;  
unite us as one in this life that we share.  
Then may all the living with praise and thanksgiving  
give honor to Christ and his name that we bear.

**\*Dismissal**

**L** Go in peace. Share the good news.

**A** Thanks be to God.

**Postlude** — “Fanfare and Processional”

Lynn Trapp



## **SERVING AT ST. JOHN'S TODAY:**

Presiding	Pastor Jonathan Davis
Preaching	Pastor Pam Fickenscher
Assisting Ministers	(8:30) Arielle Loy (10:45) Confirmands
Organist	Nathan Proctor
Choirs	(8:30) St. John's Chorale (10:45) Laudate Choir; Nathan Proctor, director
Oboe	(10:45) Jaida Gehring
Acolytes	(8:30) Jake Tanghe, Jackson Volkert (10:45) Gus Welbaum, Louise Welbaum
Communion Preparers	Dallas Berg, Robin Ness
Communion Servers	(8:30) TBD (10:45) Confirmands
Communion Cleanup	Brian Evenson, Mary Hoff
Greeters / Welcome Desk	(8:30) Marilyn Boschee, Mary Steen (10:45) Kathy Schuurman, Mary Steen
Coffee and Refreshments	Ruth Smestad Anglin, Jo Franklin, Reed Hagberg, Jon McBroom, Dawn Tommerdahl
Nursery	TBD
Counters	Chris and Martha Erickson, Elden and Solveig Zempel
Ushers	(8:30) Dan Franklin, Jim Enestvedt, Bob Johnson, Jon McBroom, Cindy McBroom, Brent Mueller, Don Sahling, Dick Werdahl (10:45) Jonathan Norrie, Alex Dell, Terry Dell, Trevor Dell, David Halsor, Dick Kleber, Steve Williams

## **ACKNOWLEDGMENTS**

Cover art by Amelia Becker.

Portions of the liturgy are reprinted from *Evangelical Lutheran Worship*, © 2006 Augsburg Fortress.

Used by permission of Augsburg Fortress license #14028-LIT. Other liturgical aids are from  
*Sundays and Seasons* © 2011 Augsburg Fortress. Reprinted with permission.

Liturgy: *ELW Holy Communion, Setting Two*

## **Learning and Fellowship Between Services**

### **This Week (October 14):**

Coffee and Fellowship, Commons  
Fair Trade Sales of Coffee and More, Commons  
Toddler Time (9:45 a.m., Room 20)  
Sunday School: Preschool-Grade 5 (9:45-10:30 a.m., Lower Level)  
Middle School Youth Group: Grades 6-8 (9:45 a.m., Youth Room)  
St. John's Forum: Beginnings (9:45 a.m., Sanctuary)  
St. John's Forum: Manna & Mercy Video Discussion Group (9:45 a.m., Fireside Room)

### **Next Week (October 21):**

Coffee and Fellowship, Commons  
St. John's Forum: Health Fair, St. John's Hall  
Accompany Newcomer Gathering (9:45 a.m., Undercroft)

## **Today's Learning Topics**

### **Manna and Mercy Video Discussion Group: *"By the Rivers of Babylon"***

**9:45-10:30 a.m., Fireside Room**

Look at Psalm 137 to find the language context for the Genesis 1 creation story. The story tells those who have lost everything that God can create beauty out of nothing. "You are born in the image of that creative God" – a message needed for those in captivity in Babylon.

### **St. John's Forum: *"Beginnings - Baptism and the Start of the Christian Life"***

**9:45-10:30 am., Sanctuary**

On this Sunday, when a number of our youth will be affirming their baptisms through the Rite of Confirmation, we will consider the sacrament of baptism and the rich meaning it has throughout the Christian life. Pastor Pam attended a conference on baptism this past spring and will lead us in learning again or perhaps for the first time, about this central event in the life of a Christian.

### **Middle School Youth Group**

**Sundays, 9:45-10:30 a.m., Youth Room**

Come to the Youth Room for yummy treats, highs and lows, a short video, and a discussion that asks the question, "Why Are We Here?"

# **Announcements**

**Today's Radio Broadcast** is given in memory of Millie Berg by Dallas Berg and family. Sunday services are broadcast on KYMN Radio 1080AM / 95.1FM from 8:30-9:30 a.m. on Sundays. If you would like to sponsor a broadcast (cost is \$160), please contact the church office. Dates available: October 28 and November 4, 11, 18 & 25. Video broadcasts can be seen on Northfield Community Television – cable channel 187, Mondays at 7:30 p.m. and Fridays at 7:00 p.m.

## **Pub Theology**

**Tomorrow, Monday, October 15**

**6:00-7:30 p.m., Location TBD**

Pub Theology is a conversation led by Pastor Pam and/or Pastor Jonathan around questions of faith, God, Jesus, the Bible, current events, and culture. No fancy theological or biblical knowledge needed in order to participate. Just bring your questions, thoughts, and experiences.

## **Creative Arts Group: “Fall Paint Night”**

**Wednesday, October 17, 6:00-6:45 p.m., St. John's Library**

The next Creative Arts Group will be a fall-themed Paint Night after the Wednesday Night Meal. Come willing to meet new people and spark your creativity together! The group will be led by LBSA's art specialist, Bridget Novak, and Music Therapist, Jenny Solar.

## **“Waking Up White” Book Study**

**Wednesdays, October 17-November 14, 6:00-7:00 p.m., Fireside Room**

As part of our *Courageous Conversations* theme we are hosting a book study, Debby Irving's “Waking Up White: And Finding Myself in the Story of Race.” Books are available at Content Book Store for 10% off if you mention St. John's. Please RSVP to Dawn Tommerdahl at [dawn.tommerdahl@gmail.com](mailto:dawn.tommerdahl@gmail.com) or Jo Franklin at [jo\\_franklin50@yahoo.com](mailto:jo_franklin50@yahoo.com).

## **From the Peace & Justice Group...Promote Work as a Means Out of Poverty**

While our faith calls us to address the immediate needs of our neighbors, we are also called to free our neighbors from the oppressions that create need in the first place. Work is an important tool to end poverty. In Minnesota, work opportunities can be expanded through job skills training, increases to the temporary cash assistance program (MFIP), and smooth transitions between receiving public benefits and work....*Ask candidates: “Will you commit to increasing the cash grant of The Minnesota Family Investment Program (MFIP)? Do you support tax credits from employers who offer employee training or career information services to their employees? How will you promote and reward job creation that offers individuals reasonable wages and benefits?”*

## **Announcements (continued)**

Rejoice Ringers, your adult handbell choir, is always appreciative of adding members looking to apply their music talents. Regular ringers require the occasional Thursday evening or Sunday morning off. Would you be willing and able to step in? Come join a rehearsal to see what bell ringing at St. John's is all about. Contact any Rejoice Ringers member or send an email to [bells@StJohnsNorthfield.org](mailto:bells@StJohnsNorthfield.org).


**Northfield CROP Hunger Walk 2018 - A Community Walk Along the New East River Trail  
Sunday, October 28, Registration - 12:30 p.m., Walk - 1:00 p.m., Lions Riverside Park**

Northfield CROP Hunger Walk is the only community-wide event to raise awareness for global poverty and hunger issues. You can donate and/or register to walk online at <https://www.crophungerwalk.org/northfieldmn/stjohns> or just do so at the Walk.

### **St. John's Website**

Please check out our website at [www.StJohnsNorthfield.org](http://www.StJohnsNorthfield.org). Our website contains additional information regarding events and programs, along with a link to our online church directory, Church Community Builder (CCB), in the top right hand corner. You can also access the church calendar.

Be sure to follow us on **Facebook** and **Twitter** (@StJohnsNF). If you have pictures we could add to our Facebook site of the happenings of our church, please email them to: [office@StJohnsNorthfield.org](mailto:office@StJohnsNorthfield.org).

	<p><b>Served from 5:15 - 6:15 p.m. in St. John's Hall</b></p> <p>Menu for Wednesday, October 17: <i>Meatloaf</i></p> <p><b>All are welcome!</b></p>
--	---

# Children and Youth Ministries

**Children and Youth programming takes a break during MEA.**

No Wednesday programming on October 17 and no Sunday school or Middle School Youth Group on October 23.

## **Toddler Time**

**Today, 9:45 a.m., Room 14 (Lower Level)**

Children age 2 (by 9-1-18) along with our preschool class are invited to Toddler Time. Come hear a story, play games, sing, create and have fun! Parents are welcome to attend too. We meet every 2<sup>nd</sup> Sunday of the month.

## **Save the Date:**

- **Wednesday, October 24:**

- 9<sup>th</sup> Graders are invited to meet with their mentors *during the Wednesday meal*. Your mentors will be contacting you.
- **Confirmation field trip** to St. Olaf Natural Lands. We will need a few parent drivers this night. Please let us know if you can help transport youth there!

- **Saturday, October 27: Third Grade Bible Retreat.** Third graders and parents meet in St. John's Hall for a Retreat on the Word—an Introduction to the Bible. Third Graders receive their own Spark Bible at the 10:45 a.m. service on Sunday, October 28. Please call or email Julie Brehmer if your child is unable to attend either day.

- **Sunday, October 28:** Following second service there will be a Summer of 2019 Youth Trips Information Session! Come learn about St. John's upcoming middle school and high school summer youth trips!

## **Children and Youth Ministries Need You!**

*An ambitious array of children and youth activities means more volunteer opportunities for St. John's members - parents, grandparents, anyone! Please consider volunteering with programming on a Sunday Morning or Wednesday afternoon/evening. We need volunteers to teach and/or help with a variety of activities. Please contact Julie Brehmer at 507-645-4429 or [children@StJohnsNorthfield.org](mailto:children@StJohnsNorthfield.org) or check out the volunteer opportunities in the registration packet. **P.S.: High School students** - talk with Julie how you can connect with our younger kids on Sundays and Wednesdays!*



# **St. John's Health Fair**

## **Sunday, October 21**

### **Between Services in St. John's Hall**

The Health Fair will feature information on the following items:

- Northfield Hospital Services and Programs
- Take it to the Box – medication disposal information
- Health Finders
- Blood Pressure Checks
- Advanced Funeral Planning
- AED Training
- Healthy Community Initiative
- Hospice/Home Health Care
- Advance Care Planning
- Mental Health/Counseling
- Stephen Ministers
- Northfield Home Care and Hospice



### ***Reformation***

## **Root Beer Pub & Bible Trivia**

**Sunday, October 28**  
**Between Services in St. John's Hall**



As we celebrate the 501<sup>st</sup> anniversary of the Reformation, all adults and high school youth are invited to join us in St. John's Hall for some Reformation root beer and good ol' Bible trivia.

We will join teams and have a friendly competition, with door prizes too!

# **This Week At-a-Glance**

<b>Monday, Oct. 15</b>	8:30 a.m.	Quilting, Fellowship Hall
	12:00 p.m.	Manna and Mercy Mondays, Fireside Room
	6:00 p.m.	Pub Theology, Location TBD
	6:30 p.m.	Girl Scout Troop #20065, Undercroft
	7:00 p.m.	Boy Scouts, Fellowship Hall
<b>Tuesday, Oct. 16</b>	8:45 a.m.	SAIL (Stay Active & Independent for Life), Fellowship Hall
	10:00 a.m.	Staff Meeting, Fireside Room
	2:00 p.m.	Worship Planning for Staff, Fireside Room
	5:15 p.m.	Sons of Norway Executive Committee, Fireside Room
	6:00 p.m.	Chapter N PEO, Undercroft
	6:30 p.m.	Stephen Ministers, Fireside Room
<b>Wed., Oct. 17</b>	5:15 p.m.	Wednesday Night Meal, St. John's Hall
	6:00 p.m.	Creative Arts Group, St. John's Library
		"Wake Up White" Book Study, Fireside Room
	7:00 p.m.	St. John's Chorale, Room 209
<b>Thursday, Oct. 18</b>	7:00 a.m.	Executive Committee, Fireside Room
	8:30 a.m.	Quilting, Fellowship Hall
	6:00 p.m.	Rejoice Ringers, Balcony
<b>Friday, Oct. 19</b>	8:45 a.m.	SAIL (Stay Active & Independent for Life), Fellowship Hall
<b>Saturday, Oct. 20</b>		No Scheduled Activities - Building Closed
<b>Sunday, Oct. 21</b>	8:30 a.m.	Worship / Nursery
		<i>(For Schedule Between Services, please see page 13)</i>
	10:45 a.m.	Worship / Nursery

## **Reminder of Deadlines:**

Weekly Announcements: Wednesday by 2:00 p.m.  
the Voice: October 15<sup>th</sup> for the November Edition

Please send submissions electronically to [office@StJohnsNorthfield.org](mailto:office@StJohnsNorthfield.org)  
 Thank you.

## **Prayer Requests**

*We are called to remember one another in prayer. The church office has been made aware of the following persons for whom we pray today. This list is also for your use this week.*

### **Healing and Support**

*Those in the hospital or in need of healing*

Jane Koskovich, Eldora Seitz

*Those with ongoing health concerns*

Marybeth Bremer, Mary Gasho, Fred Gonnerman, Elvin Heiberg, Fred Huemoeller,  
Mary Ingbritsen, Sally Lindell, Becky Ness, Susan Nissen, Bette Quinnell, Betty Schuette,  
Eulalie Smestad, Joanne Sommers, Jim Thompson, Laila Burns Hedstrom

*All who are homebound, including*

Lyla Arneson Paulson, Rodney and Janice Helgeson

*Involved in the mission of the church who have ties to St. John's*

The Savior (El Salvador) Lutheran Church in El Cocuy, Colombia;  
Iambi Lutheran Church in Iambi, Tanzania; Randy Stubbs & Family,  
ELCA missionaries in Tanzania; Curtis and Katie Kline, ELCA missionaries in Colombia

*Members of St. John's studying at seminary, including*

Henry Burt, Hayden Kvamme

*Refugees from Ethiopia being sponsored by St. John's*

Paul, Ariat, and their family

### **Prayer Requests / Stephen Ministry Requests**

*Stephen Ministry Requests*

Call Joan Halvorson at 507-645-8445 or one of the pastors at 507-645-4429.

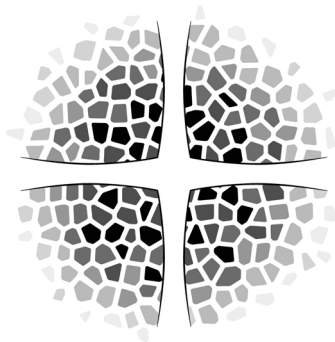
*Prayer Chain Requests*

Contact Mary Cisar at 507-663-1097 or [macisar@gmail.com](mailto:macisar@gmail.com), or contact a pastor.

## **Lectionary Readings for Next Week (October 21):**

*Twenty-Second Sunday after Pentecost*

Isaiah 53:4-12 † Psalm 91:9-16 † Hebrews 5:1-10 † Mark 10:35-45



# St. John's

ELCA NORTHFIELD · MN

**500 Third Street West**

**Northfield, MN 55057**

**507-645-4429**

**[office@StJohnsNorthfield.org](mailto:office@StJohnsNorthfield.org)**

**[www.StJohnsNorthfield.org](http://www.StJohnsNorthfield.org)**

Pam Fickenscher and Jonathan Davis, *Pastors*

Carol Benson, *Director of Jubilate Choir*

Melissa Berthelsen, *Parish Nurse*

Julie Brehmer, *Director of Children's Ministry*

Tim Byers, *Facility Manager*

Leah H. Garlie, *Office Manager*

Angie Gehring / Emerson Clay, *Youth Support Staff*

Christy Hall-Holt / Mary Kelvie, *Shared Ministry Coordinators*

Arielle Loy, *Director of Alleluia Choir*

Zachery Pelletier, *Director of Rejoice Ringers*

Jaida Gehring / Marvin Perez, *Security and Custodial Assistants*

Nathan Proctor, *Organist and Director of Worship, Music & Arts*

Bernie Renander, *Financial Manager*

Call the Church Office, or check the website for a complete listing of staff emails.