



SERVICE OF HOLY COMMUNION

THIRTEENTH SUNDAY AFTER PENTECOST

SEPTEMBER 7, 2025 † 9:30 A.M.

ST. JOHN'S LUTHERAN CHURCH † NORTHFIELD, MINNESOTA

Welcome to worship at St. John's!

We especially welcome all who are visiting this morning!

*All are invited to **sign the welcome sheets** in the black folders at the end of the pews.*

*Please pass them to the center and then back
so you can greet those worshipping around you.
Ushers will gather these following worship.*

*In the red hymnal (Evangelical Lutheran Worship), or purple hymnal
(All Creation Sings), hymn numbers are at the top of the page in the hymn section,
and page numbers are at the bottom of the page in the front section.*

An asterisk () invites you to stand as you are able.*

P Pastor, **L** Leader (Assisting Minister), **C** Congregation

Children are welcome to participate throughout our
worship service, including at Holy Communion.

*Parents, please assist children when they come forward for communion
to extend their hands if they are to receive the bread and wine.*

Children's Bibles and activity bags
*are available at both entrances to the Sanctuary
and scribble cards are available in the pews.*

*Hearing assistance devices are available outside the Sanctuary or from an usher.
For those with hearing aids, the Sanctuary is equipped with a hearing loop.*

Large print bulletins and hymns are available for worship services.



*St. John's Lutheran Church is a community grounded in the promise of God's grace
and called to extend Christ's welcome to all people. Every day, Christ meets us all just as
we are, extending love to people of every age, race or ethnicity, physical appearance,
sexual orientation, gender identity, physical or mental ability, marital or
relationship status, economic circumstance, educational achievement,
political affiliation, or religious background.*

*While we do not always agree, we choose to walk and grow in faith together,
believing that God creates diversity, and loves and welcomes us.*

We warmly welcome you here.

GATHERING IN GOD'S PRESENCE

Prelude — Partita on CRUCIFER

Charles Callahan

Welcome and Announcements

***Gathering Hymn** — ELW No. 660

“Lift High the Cross”

***Confession and Forgiveness**

P In the name of the Father,
and of the ✠ Son,
and of the Holy Spirit.

G Amen.

P Baptized into Christ, let us confess our sin.

Silence is kept for reflection.

Merciful God,

G you free us to love others, but we neglect our neighbors and follow our own way. You lead us by the Spirit of joy and peace, but we turn away from the abundant life you offer. You surround us with patience, kindness, and generosity, but we grow weary in doing what is right. In your mercy, forgive us. Do not give up on us. Heal us, break our bonds, and show us the path of life. Amen.

P You belong to Christ Jesus and you are God's children through faith. In the cross of ✠ Christ, and through the power of the Holy Spirit, your sins are forgiven. Clothed with Christ, you are a new creation.

G Amen.

***Greeting**

P The grace of our Lord Jesus Christ, the love of God,
and the communion of the Holy Spirit be with you all.

G And also with you.

*Prayer of the Day

- P** Direct us, O Lord God, in all our doings with your continual help, that in all our works, begun, continued, and ended in you, we may glorify your holy name; and finally, by your mercy, bring us to everlasting life, through Jesus Christ, our Savior and Lord.
- C** Amen.

HEARING GOD'S WORD

Children's Message

First Reading — Deuteronomy 30:15-20

¹⁵"See, I have set before you today life and prosperity, death and adversity. ¹⁶If you obey the commandments of the LORD your God that I am commanding you today, by loving the LORD your God, walking in his ways, and observing his commandments, decrees, and ordinances, then you shall live and become numerous, and the LORD your God will bless you in the land that you are entering to possess. ¹⁷But if your heart turns away and you do not hear but are led astray to bow down to other gods and serve them, ¹⁸I declare to you today that you shall certainly perish; you shall not live long in the land that you are crossing the Jordan to enter and possess. ¹⁹I call heaven and earth to witness against you today that I have set before you life and death, blessings and curses. Choose life so that you and your descendants may live, ²⁰loving the LORD your God, obeying him, and holding fast to him, for that means life to you and length of days, so that you may live in the land that the LORD swore to give to your ancestors, to Abraham, to Isaac, and to Jacob."

- L** The word of the Lord.
- C** Thanks be to God.

Psalmody — Psalm 1

Antiphon: Spiritual

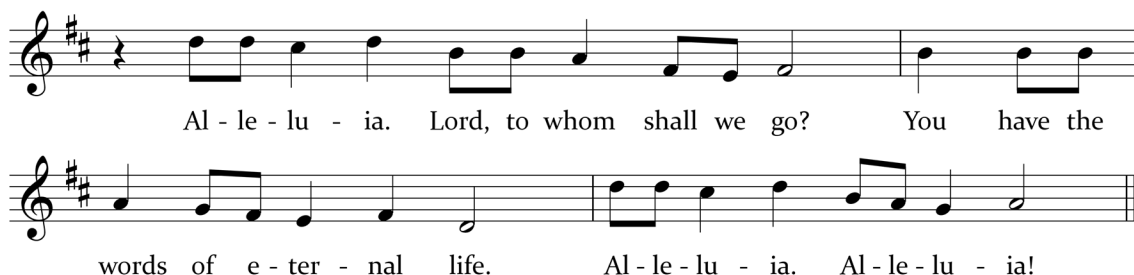
Antiphon: Like a tree planted by the water, I shall not be moved.



- ¹Happy are they who have not walked in the counsel [|] of the wicked,
nor lingered in the way of sinners, nor sat in the seats [|] of the scornful!
- ²**Their delight is in the law [|] of the LORD,**
and they meditate on God's teaching [|] day and night.

³They are like trees planted by streams of water,
 bearing fruit in due season, with leaves that | do not wither;
 everything they | do shall prosper.
⁴**It is not so | with the wicked;**
they are like chaff which the wind | blows away.
⁵Therefore the wicked shall not stand upright when | judgment comes,
 nor the sinner in the council | of the righteous.
⁶**For the LORD knows the way | of the righteous,**
but the way of the wicked shall | be destroyed. *Antiphon*

***Gospel Acclamation**



***Gospel — Luke 14:25-33**

P The Holy Gospel according to Luke, the 14th chapter.

G **Glory to you, O Lord.**

²⁵Now large crowds were traveling with [Jesus], and he turned and said to them,
²⁶“Whoever comes to me and does not hate father and mother, wife and children, brothers
 and sisters, yes, and even life itself, cannot be my disciple. ²⁷Whoever does not carry the
 cross and follow me cannot be my disciple. ²⁸For which of you, intending to build a tower,
 does not first sit down and estimate the cost, to see whether he has enough to complete
 it? ²⁹Otherwise, when he has laid a foundation and is not able to finish, all who see it will
 begin to ridicule him, ³⁰saying, “This fellow began to build and was not able to finish.” ³¹Or
 what king, going out to wage war against another king, will not sit down first and consider
 whether he is able with ten thousand to oppose the one who comes against him with
 twenty thousand? ³²If he cannot, then while the other is still far away, he sends a delega-
 tion and asks for the terms of peace. ³³So therefore, none of you can become my disciple if
 you do not give up all your possessions.”

L The Gospel of the Lord.

G **Praise to you, O Christ.**

RESPONDING TO GOD'S WORD

Hymn of the Day — ACS No. 958

“To Christ Belong, in Christ Behold”

*Apostles' Creed

I believe in God, the Father almighty,
creator of heaven and earth.

I believe in Jesus Christ, God's only Son, our Lord,
who was conceived by the Holy Spirit,
born of the virgin Mary,
suffered under Pontius Pilate,
was crucified, died, and was buried;
he descended to the dead.
On the third day he rose again;
he ascended into heaven,
he is seated at the right hand of the Father,
and he will come to judge the living and the dead.

I believe in the Holy Spirit,
the holy catholic church, the communion of saints,
the forgiveness of sins, the resurrection of the body,
and the life everlasting. Amen.

*Prayers of Intercession

After each petition:

- ☞ Lord, in your mercy,
- ☞ hear our prayer.

*Peace

P The peace of Christ be with you always.

C And also with you.

You are invited to share God's peace with those around you.

Offering of Our Gifts

Music at the Offering

"Steal Away"

Spiritual; arr. Mosie Lister

Steal away to Jesus. Steal away home. I ain't got long to stay here. My Lord, he calls me by the thunder; the trumpet sounds within-a my soul. I ain't got long to stay here. Green trees a-bending, poor sinner stands a-trembling; the trumpet sounds within-a my soul. I ain't got long to stay here.

*Offering Hymn — "Let the Vineyards Be Fruitful"



Let the vine - yards be fruit-ful, Lord, and fill to the brim our cup of bless-ing.

Gath - er a har-vest from the seeds that were sown, that we may be fed with the

bread of life. Gath - er the hopes and the dreams of all; u -

nite them with the prayers we of - fer now. Grace our ta - ble with your

pres - ence, and give us a fore-taste of the feast to come.

*Offering Prayer

L Let us pray.

C Lord of the harvest, we return to you a portion of what you have given to us. Turn us to set our hope not on the uncertainty of riches, but on you, who richly provides for us. Multiply what we have gathered to bless all who are suffering and in need, through Jesus Christ our Lord. Amen.

SHARING THE LORD'S SUPPER

*Great Thanksgiving



P The Lord be with you. **C** And al - so with you.



P Lift up your hearts. **C** We lift them to the Lord.



P Let us give thanks to the Lord our God. **C** It is right to give our thanks and praise.

P It is indeed right . . . we praise your name and join their unending hymn:



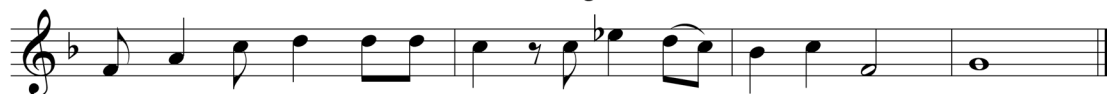
Ho - ly, ho - ly, ho - ly Lord, God of pow'r and might,



heav - en and earth are full of your glo - ry. Ho - san - na. Ho -



san - na. Ho - san - na in the high - est. Bless - ed is he who



comes in the name of the Lord. Ho-san - na in the high - est.

*Words of Institution

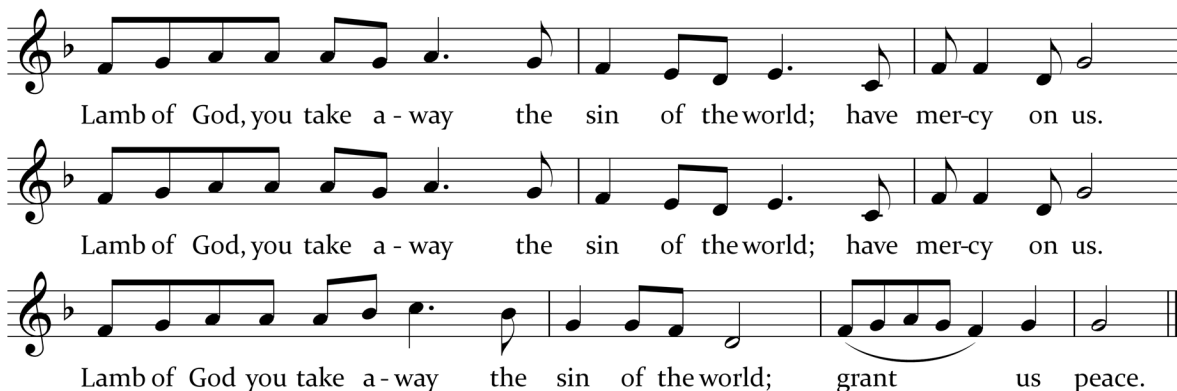
*The Lord's Prayer

Our Father in heaven, hallowed be your name,
your kingdom come, your will be done, on earth as in heaven.
Give us today our daily bread. Forgive us our sins as we forgive those
who sin against us. Save us from the time of trial and deliver us from evil.
For the kingdom, the power, and the glory are yours, now and forever. Amen.

*Communion will be received standing at stations in the front of sanctuary; ushers will direct you forward. **Gluten-free wafers** are available in the center. After you have been served the bread you will be offered wine or grape juice. The grape juice is white and is located in the center of the tray. **If you are unable to come forward, let an usher know, and communion will be brought to you.***

Music during Communion

"Lamb of God"



The musical notation for "Lamb of God" is presented in three staves, each with a treble clef and a key signature of one flat (B-flat). The melody is simple and repetitive, consisting of eighth and quarter notes. The lyrics are written below each staff, with the first two staves having identical lyrics and the third staff having a slightly different ending.

Lamb of God, you take a - way the sin of the world; have mer-cy on us.

Lamb of God, you take a - way the sin of the world; have mer-cy on us.

Lamb of God you take a - way the sin of the world; grant us peace.

Anthem — "Nearer, My God, to Thee"

arr. Rudy Hart

*Nearer, my God to thee, nearer to thee, e'en tho' it be a cross that raiseth me;
still all my song shall be, nearer, my God, to thee. Tho' like the wanderer, the sun
gone down, darkness be over me, my rest a stone; yet in my dreams I'd be, nearer,
my God, to thee. There let my way appear steps unto heaven, all that thou sendest
me, in mercy given; angels to beckon me, nearer, my God, to thee.*

Hymn — ELW No. 802

"Let Us Ever Walk with Jesus"

***Post-Communion Blessing**

***Sending of Communion to the Sick and Homebound**

***Prayer after Communion**

☞ O God, through this meal you have strengthened us and appointed us to be your servants. Send us to do good and to share our possessions with all in need. We ask this in Jesus' name.

☞ **Amen.**

DEPARTING TO SERVE GOD'S WORLD

***Blessing**

Response: ☞ **Amen.**

***Sending Hymn** — ELW No. 774

“What a Fellowship, What a Joy Divine”

***Dismissal**

☞ Go in peace. Serve the Lord.

☞ **Thanks be to God!**

Postlude — “Fanfare for a New Day”

J. Wayne Kerr



ACKNOWLEDGMENTS

Cover image from *Icon 1*. Used with permission.

Portions of the liturgy are reprinted from *Evangelical Lutheran Worship*, © 2006 Augsburg Fortress.

Liturgy setting: Holy Communion Setting 3 by Richard Hillert.

Used by permission of Augsburg Fortress license #14028-LIT. Other liturgical aids are from *Sundays and Seasons* © 2024 Augsburg Fortress. Music reprinted and podcasted under One License A-708009.

SERVING AT ST. JOHN'S TODAY:

Preaching	Pastor Pam Fickenscher
Presiding	Pastor Jonathan Davis
Assisting Minister	Brenda Nelson
Organist	Nathan Proctor
Quartet	Dave Legvold, Rich Erickson, David Sims, Nathan Proctor
Piano	Ruth Legvold, David Sims
Communion Service	Angie Gehring, Beth Cox
Greeters	Pam Groves-Gaggioli, Mary Ellen North
Coffee Service	Angie Gehring, Beth Cox
Refreshments	Gerri Licke, Rhonda Reece, Marcia Yernberg
Counters	Brenda Bultman, Janell Martin, Mark Ulmer
Ushers	Chris Tacheny, Christy and Olaf Hall-Holt



Announcements

Additional announcements can be found in the weekly E-Voice.

Today's Radio Broadcast is given by Cindy Clauson. Sunday services are broadcast on KYMN Radio 1080AM/95.1FM at 9:30 a.m. on Sundays. If you would like to sponsor a broadcast (cost is \$160), contact Leah Garlie at 507-645-4429 or office@StJohnsNorthfield.org. Next available dates: October 5, 12 & 26 and November 2 & 23.

St. John's WELCA 150th Birthday Bash & Hotdish Hoedown

Saturday, October 11, 11:00 a.m.–1:30 p.m., St. John's Hall

Tickets go on sale today after worship in the Commons. \$15.00 (they will be \$20 at the door).

Community Survey

What concerns do you and your family have about our common future? St. John's is asking adults in our community to respond to a survey about community needs ranging from housing to food to medical care. The results are anonymous and will be used to shape how we work with other faith-based communities to address common needs. You can fill it out online from the link sent in the E-Voice or today at the table in the Commons.

Courageous Conversations Launches a New Season of Monthly Programs with the Theme, "*Creating Community for Common Good*"

Our kickoff speaker on Thursday, September 11, at 7:00 p.m., will be Northfield School District Superintendent Dr. Matt Hillmann, who will present "*Why Public Education Matters.*" Hillman will discuss why public education is a cornerstone of a successful democracy, how he stays positive in the face of challenges, and what community members can do to engage with the work of our schools.

Volunteers Needed for the Old-Fashioned Meatball Dinner Hosted by WELCA

Wednesday, September 24, 5:15–6:15 p.m., St. John's Hall

Help us recreate a night from the past for the congregation at the Wednesday Night Meal. We need Jell-O salads, brownies, serving help, clean up help, etc. Sign up online through CCB (link in the E-Voice) or contact Pam Groves-Gaggioli at 562-237-3781 or ladylynneg@gmail.com.

Bells Ringing for Gaza on September 16

Churches in Northfield (including ours) will simultaneously ring bells on Tuesday, September 16, at 4:21 p.m. as a Wordless Prayer for Humanity in Gaza. Organized by citizens of Northfield and supported by Palestine in Northfield and Northfielders for Justice in Palestine/Israel, there will be a gathering at 4:00 p.m. at Bridge Square to create a circle and gather in silence as church bells ring at 4:21 p.m. 4:21 represents the 4.21 million people in Gaza at the start of the war, and bells will ring for 8 minutes to represent the 84,000 lives lost. Community members unable to come to Bridge Square are encouraged to take a moment outside to listen to the bells.

Announcements (continued)

Accompany Program Invitation for Newcomers this Fall

Sundays, October 19–November 23, 9:45–10:40 a.m. in the Undercroft

Accompany is our approach to welcoming those new to St. John's and for those possibly considering membership. The program consists of six gatherings that meet on Sundays between the worship services in which learning more about our church, making connections with others, and spiritual reflection are the focus. If you are interested in participating, please contact Angie Gehring at sharedministry@StJohnsNorthfield.org. We look forward to having you join us!

Meals on Wheels Volunteer Drivers Needed

We have only two more slots to fill: September 12 and October 3, both for the Green Route. Sign up in CCB at: [Meals on Wheels Driver Sign-Up](#). If you aren't a CCB user, you may contact Andrea Hoff at andrea.hoff37@gmail.com or 612-743-5767 to schedule your delivery date(s). Thank you!

Reminder of Deadlines

Please send all submissions electronically to Leah Garlie at office@StJohnsNorthfield.org.

- Sunday Bulletin and E-Voice Announcements: Due by Wednesday at 2:00 p.m.
- *The Voice* (October 2025 Edition): Due September 15

Children and Youth

Registration is Open for Children and Youth Programs for the 2025–2026 School Year

Check out St. John's website at: stjohnsnorthfield.org/congregational-life/. Click on "Children" or "Youth" to find out more about the programs available. Register by using this QR code or click on "Register" on our website.



Children and Youth Ministries 2025–2026 School Year Connections Night

Wednesday, September 10

Parents, children, and youth: come reconnect after the summer and launch the 2025–2026 program year. As a community we'll share information, questions and responses, and get a glimpse of the year to come. Snacks will be provided.

- **Wednesday Afterschool Programming and Catechism** at 6:00 p.m.
- **Wednesday Confirmation and High School Youth Group** at 6:30 p.m.

Lectionary Readings for Next Week (September 14):

Fourteenth Sunday after Pentecost

Exodus 32:7-14 † Psalm 51:1-10 † 1 Timothy 1:12-17 † Luke 15:1-10

Prayer Requests

We are called to remember one another in prayer. The church office has been made aware of the following persons for whom we pray today. This list is also for your use this week.

Healing and Support

Those in the hospital or in need of healing

Cindy Clauson, Irene Dorantes Perez, Fred Huemoeller, Audrey Moe,
Patrice Nordstrand, Glen Norgaard (father of Brett Norgaard)

Those with ongoing health concerns

Greta Matzner-Gore, Dolores Nelson, Mary Ellen North, Alice Rickert,
Kathy Vang, Ruth Smestad Anglin, Ingrid Alberding, Kathy Applebee,
Darlene Schloeder (mother of April Fitzloff)

All who are homebound, including

Laila Burns Hedstrom, Janice Helgeson

Involved in the mission of the church who have ties to St. John's

The Savior (El Salvador) Lutheran Church in El Cocuy, Colombia;
Iambi Lutheran Church in Iambi, Tanzania; Katie Larson, ELCA missionary in Colombia

Prayer Requests / Stephen Ministry Requests

Stephen Ministry Requests

Contact one of the pastors at 507-645-4429.

Prayer Chain Requests

Contact Mary Cisar at 507-663-1097 or macisar@gmail.com, or contact a pastor.

VOICES OF ST. JOHN'S

On Giving & Receiving

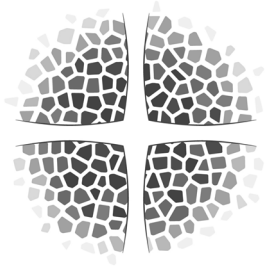
“ Giving freely is like tossing a pebble in a calm body of water: the ripples go on and on. You just know that you're helping to make a difference by giving what you have. ”

- Kristy Harms

This Week At-a-Glance

*The full calendar of events and building usage can be accessed
on our website at www.StJohnsNorthfield.org.*

Monday, Sept. 8	9:00 a.m.	Monday Exercise Class, Fellowship Hall
	9:30 a.m.	WELCA Executive Board Meeting, Undercroft
	12:00 p.m.	Lunchtime Text Study via Zoom
	6:00 p.m.	Boy Scout Pack #300, Sunday School Classrooms
	7:00 p.m.	Boy Scout Troop #9313, Fellowship Hall
Tuesday, Sept. 9	7:45 a.m.	Tai Chi Class, Fellowship Hall
	9:00 a.m.	S.A.I.L. Exercise Class, Fellowship Hall
	10:00 a.m.	Staff Meeting, Fireside Room
	1:00 p.m.	Worship Planning for Staff, Fireside Room
	5:00 p.m.	Girl Scout Troop #27517, Fellowship Hall
	7:00 p.m.	Church Board Meetings, St. John's Hall
Wednesday, Sept. 10	9:30 a.m.	Lydia and Paul Circles, St. John's Library
	6:00 p.m.	Connections Night for Children, St. John's Hall
	6:30 p.m.	Connections Night for Youth, Fellowship Hall
		Politics & Faith Discussion Group, St. John's Hall
	7:00 p.m.	St. John's Chorale, Room 209
Thursday, Sept. 11	7:45 a.m.	Tai Chi Class, Fellowship Hall
	9:00 a.m.	Quilting & Bandage Rolling, Fellowship Hall
	10:00 a.m.	Prayer Shawl Knitters, St. John's Library
	1:30 p.m.	Elizabeth Circle, St. John's Library
	7:00 p.m.	St. John's Courageous Conversations, St. John's Hall
Friday, Sept. 12	9:00 a.m.	S.A.I.L. Exercise Class, Fellowship Hall
	7:00 p.m.	NAMI Support Group, Fireside Room
Saturday, Sept. 13	9:00 a.m.	Women's Breakfast Group, Fireside Room
Sunday, Sept. 14	8:30 a.m.	Worship, Sanctuary
	9:30 a.m.	WelcomeFest, St. John's Hall
	10:45 a.m.	Worship, Sanctuary
	3:00 p.m.	Bridge Chamber Music Festival Concert, Sanctuary



St. John's
ELCA NORTHFIELD • MN

500 Third Street West
Northfield, MN 55057
507-645-4429
office@StJohnsNorthfield.org
www.StJohnsNorthfield.org

Pam Fickenscher, *Senior Pastor*
Jonathan Davis, *Associate Pastor*
Julie Brehmer, *Director of Children's Ministry*
Steve Harner, *Facility Manager*
Leah H. Garlie, *Office Manager / Finance Manager*
Angie Gehring, *Shared Ministry Coordinator*
Sally Lindell, *Parish Nurse*
Arielle Loy, *Alleluia Choir Director and Early Childhood Specialist*
Kristin Partlo, *Director of Ministry with Youth & Families*
Nathan Proctor, *Organist and Director of Worship, Music & Arts*
Arturo Rosas, *Custodial Associate*
David Sims, *Director of Rejoice Ringers*

Call the church office or check the website for a complete listing of staff emails.

*St. John's Lutheran Church stands on the
ancestral homelands of the Wahpekute band of the Dakota nation.
We respect and are grateful for the generations of native people who have cared for this land.*